

MEMS 的產品應用

Reported: 台北工程部

Date: Mar 14th 2020



- What is MEMS ?
- 光的基礎介紹(亮度,色溫,反射)
- 相關產品介紹(ALS,CS,PS)



What is MEMS ?

AENEAS



IC : Integrated Circuit

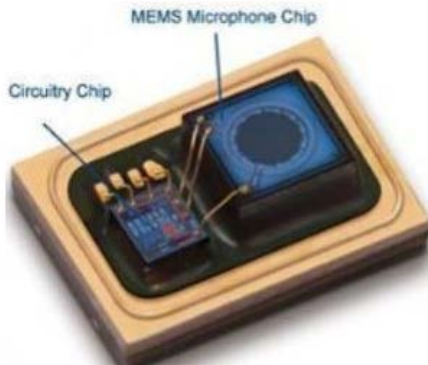
1~10 M **electronic devices** to be integrated on a small silicon chip (1~10 mm²)



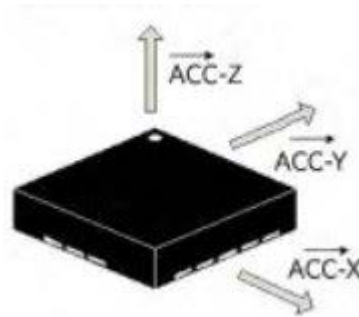
MEMS : Micro-electro-mechanical system

1~10 **mechanical devices** to be fabricated on a small silicon chip (1~10 mm²)

Digital Mic



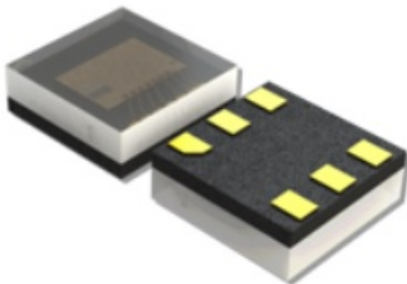
G Sensor



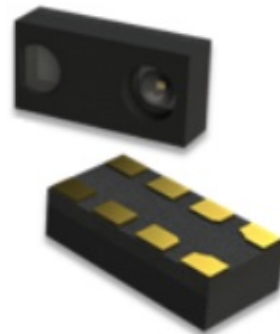
Gyro Sensor



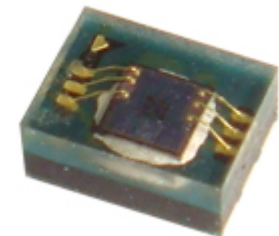
Ambient Light Sensor

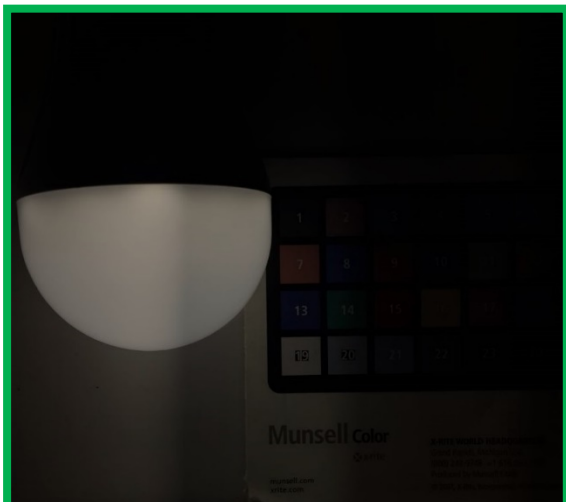


Proximity Sensor



Color Sensor

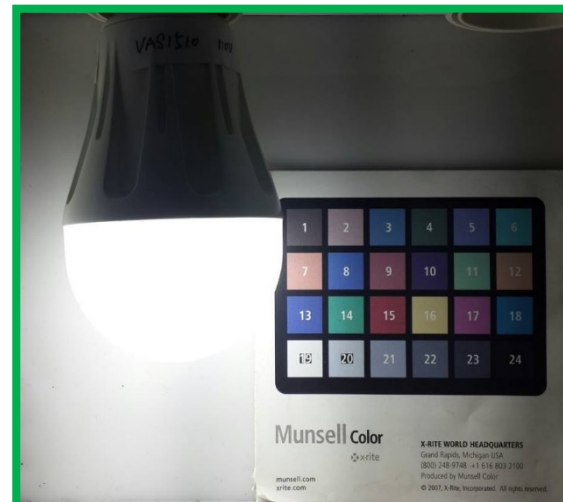




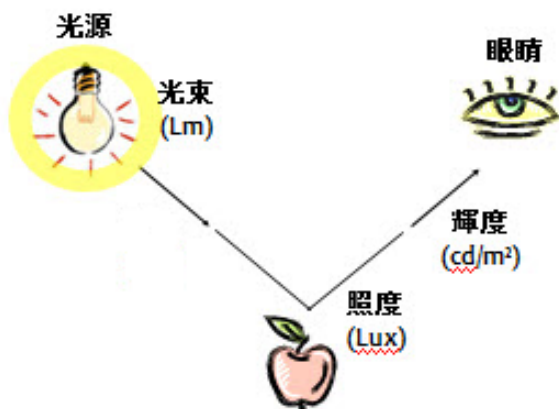
30 Lux



70 Lux



200 Lux

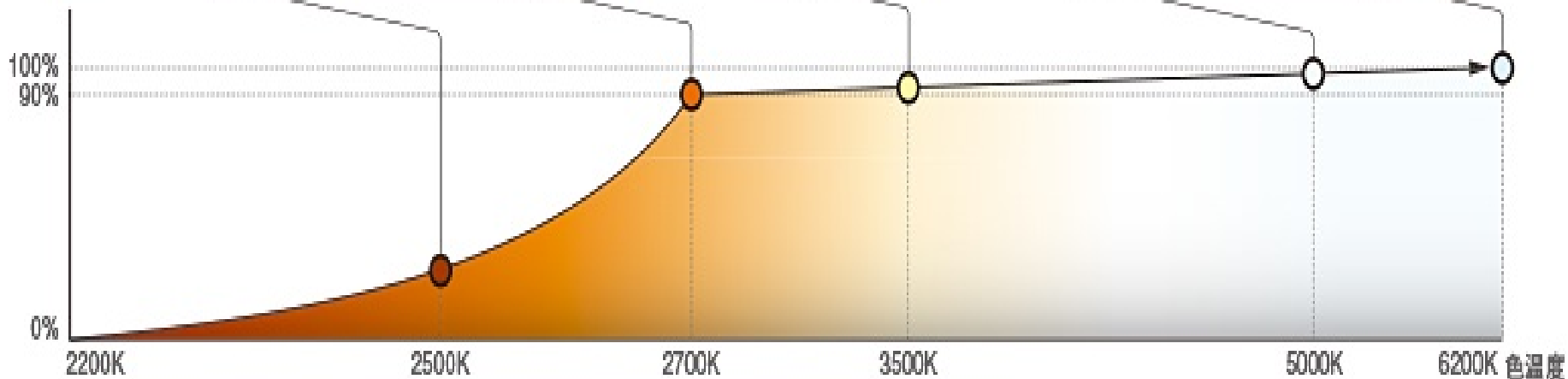


光的單位
發光體：**Lm(流明)**
環境：**Lux**



Light Temperature

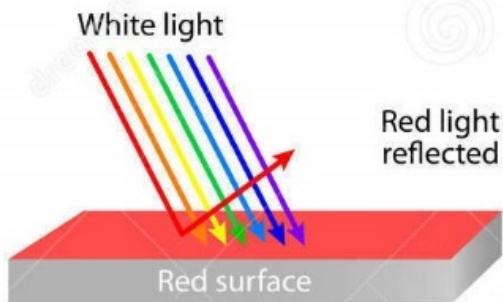
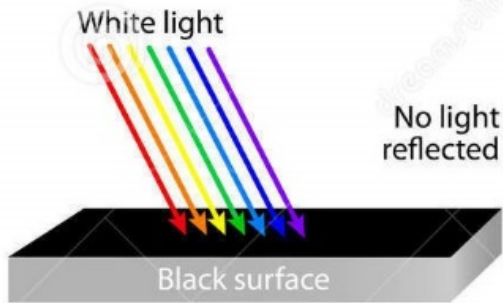
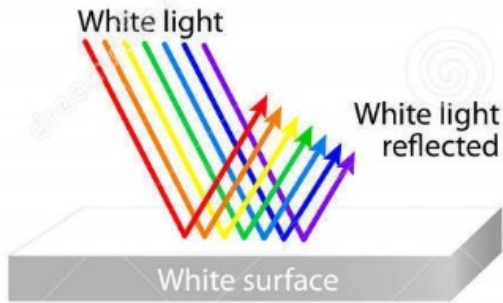
AENEAS





Light Reflection

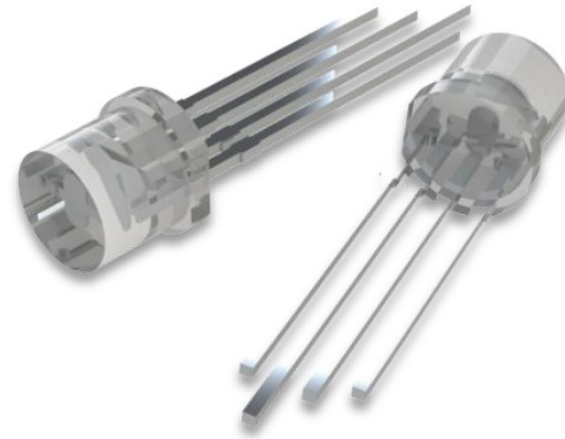
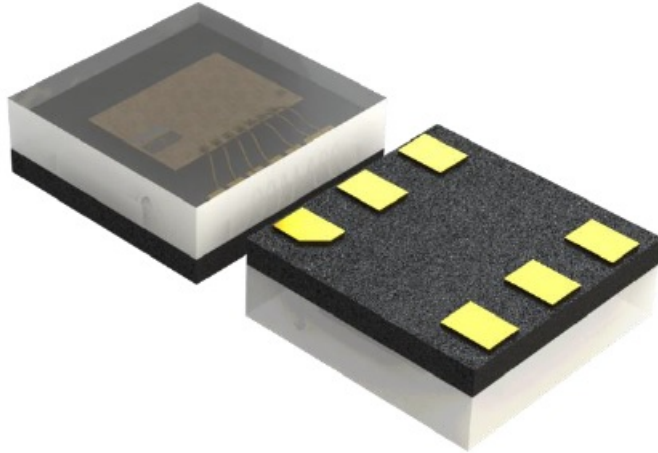
AENEAS





Ambient Light Sensor(ALS)

AENEAS



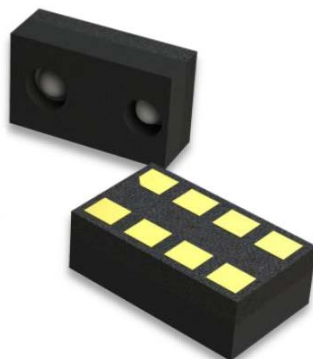
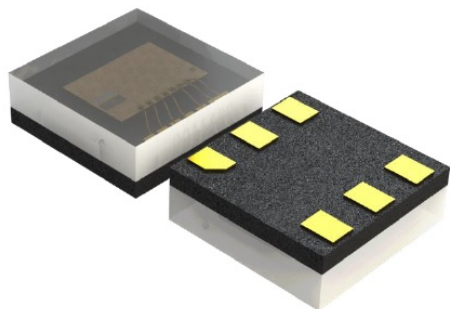
UCS 11161	
Pin 1	VDD(2.4V-3.6V)
Pin 2	NC
Pin 3	GND
Pin 4	SCL
Pin 5	INT
Pin 6	SDA

UCS 11563	
Pin 1	VDD(2.4V-3.6V)
Pin 2	GND
Pin 3	SDA
Pin 4	SCL



Proximity Sensor

AENEAS



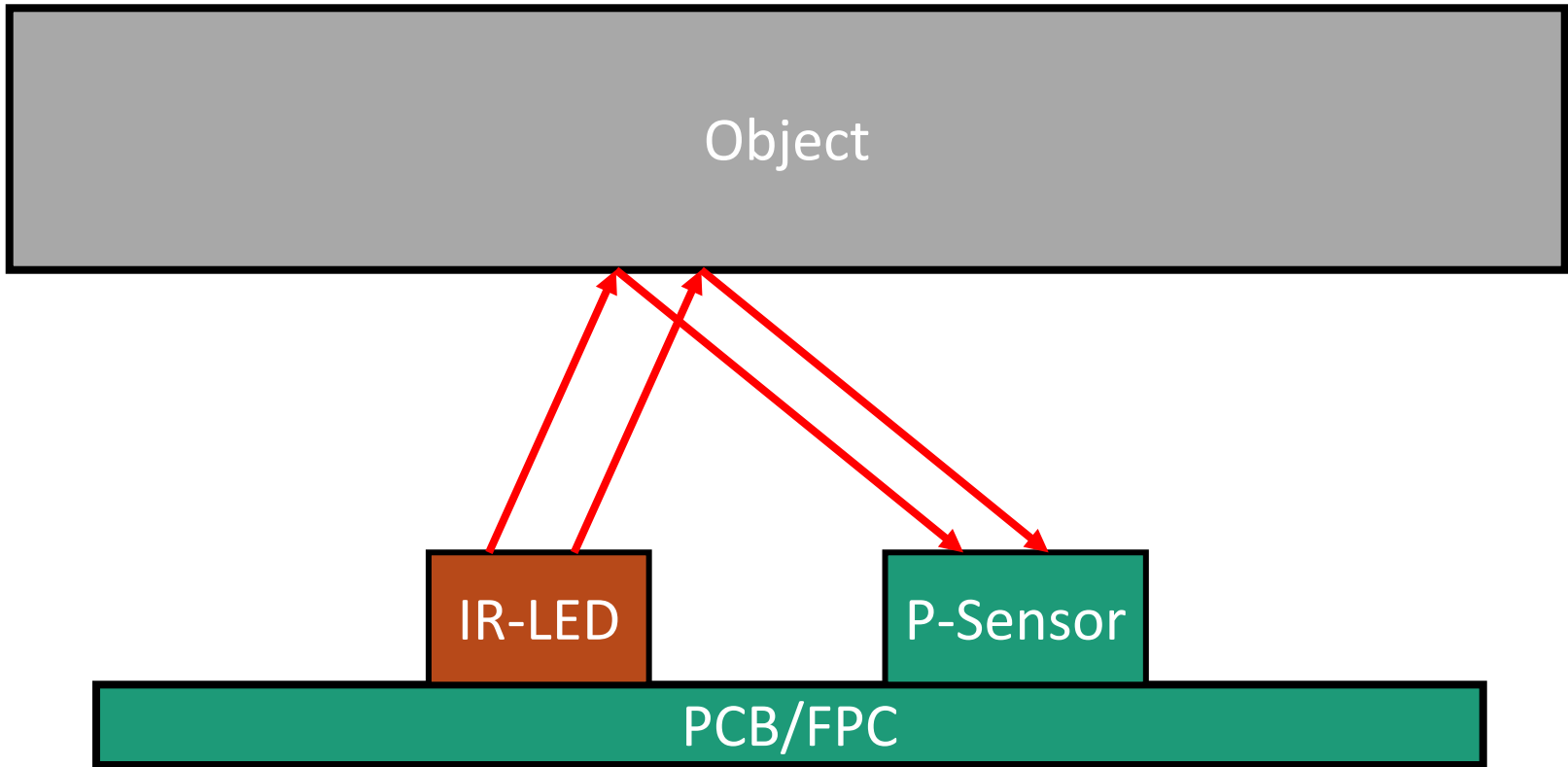
UCS 14161 (2in1)	
Pin 1	VDD(2.4V-3.6V)
Pin 2	LDR
Pin 3	GND
Pin 4	SCL
Pin 5	INT
Pin 6	SDA

UCS 14266 (3in1)	
Pin 1/8	VDD(2.4V-3.6V)/SDA
Pin 2/7	SCL/INT
Pin 3/6	GND/LDR
Pin 4/5	LEDA/LEDK
Dimension	3.94x2.36x1.35(mm)

UCS 14077 (3in1) 小孔	
Pin 1/8	VDD(2.4V-3.6V)/SDA
Pin 2/7	SCL/INT
Pin 3/6	GND/LDR
Pin 4/5	LEDA/LEDK
Dimension	3.65x2.10x1.0(mm)

2 in 1 = ALS + PS

3 in 1 = ALS + PS + IR-LED





欲知詳情請洽...

AENEAS

F&E team

aeneas_fae@aeneas.com.tw





Thank You

AENEAS

